



TK International  
020 7794 8700  
www.t-k.co.uk

Residential Sales  
Residential Lettings  
Property Management

Sales Office:  
9 Heath Street  
Hampstead  
London NW3 6TP  
E: sales@t-k.co.uk

Lettings Office:  
16-18 Heath Street  
Hampstead  
London NW3 6TE  
E: lettings@t-k.co.uk

tk.international  
TK International  
TK International

Est.  
1998



## Lisburne Road Hampstead NW3

Located within this ever popular quiet side road in the heart of South End Green, is this beautifully and imaginatively appointed mid terrace five bedroom three storey Victorian family house of some 1,880 sq ft (175 sq m), which is offered for sale in excellent decorative order throughout.

The present owners have thoughtfully re-modelled and refurbished the house using the highest quality materials, to provide a striking interior which marries contemporary design with Period charm.

The ground floor offers generous split level living with a 27'9 x 16'9 double reception room (plus guest wc), seamlessly leading down into the 27' kitchen/dining room, with bespoke kitchen by Italian designer Massimo Iosa Ghini, with large central island, solid timber herringbone floors and bi-fold doors leading directly onto the charming decked rear garden.

The upper floors provide a bedroom and family bathroom on the first half landing, a large bedroom/study/drawing room and further double bedroom on the first floor and the principal bedroom, guest bedroom and shower room on the second floor.

Lisburne Road is located close to the excellent cafes, restaurants, Marks & Spencer's food hall and public transport hub of South End Green, let alone the vast open spaces of Hampstead Heath and its ponds which are located a short walk away.

**£2,645,000**

**SOLE AGENT**

**Freehold**











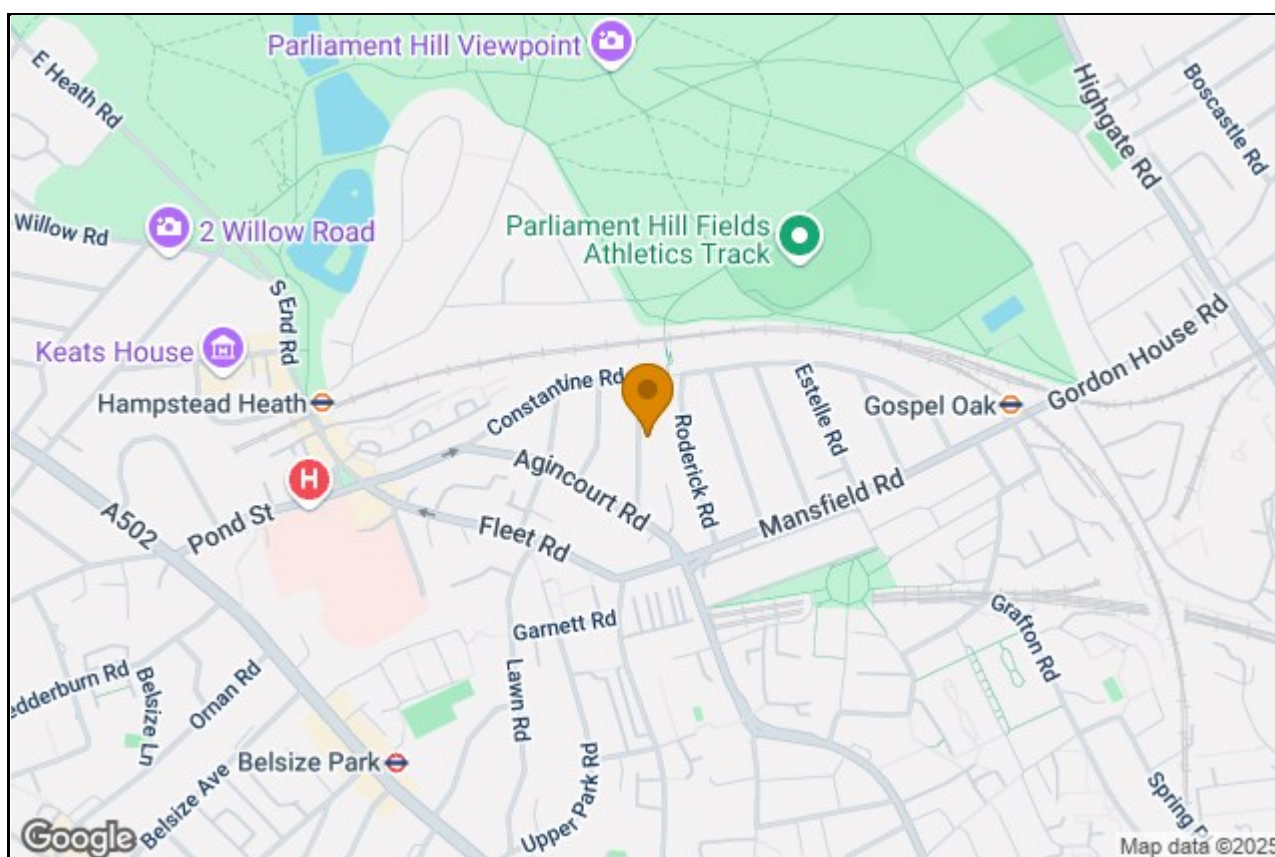










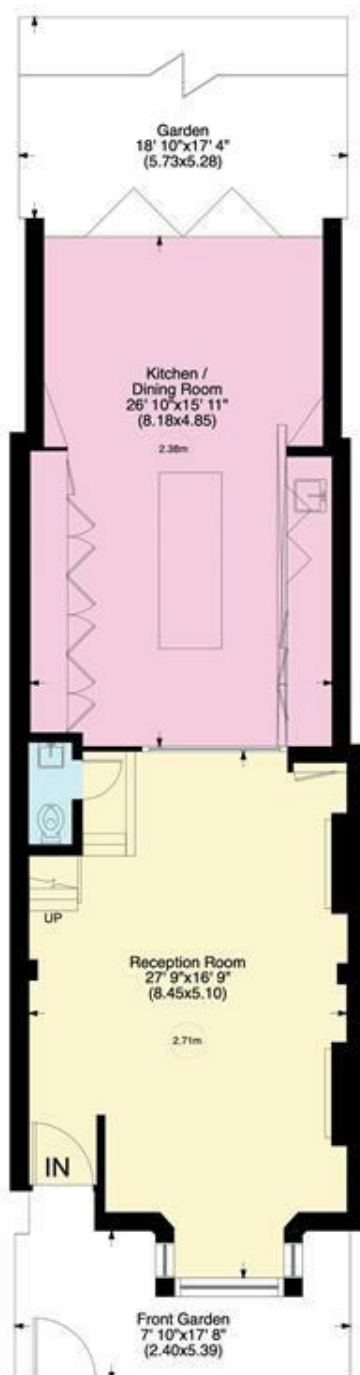


# Lisburne Road NW3

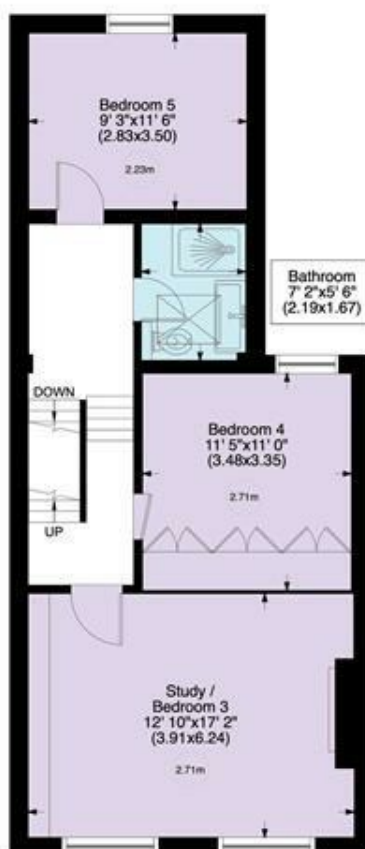
Gross internal area (approx.)

175 Sq m (1880 Sq ft)

For identification only, Not to Scale



Ground Floor



First Floor



Second Floor

[www.WilliamSalisbury.Photography](http://www.WilliamSalisbury.Photography)

Not to Scale, for guidance only and must not be relied upon as a statement to fact. All measurements areas are approximate only (and have been prepared in accordance with the current edition of the RICS Code of Measuring Practice).